



THE WORLDWIDE SOURCE FOR  
SPECIALTY ACCESS PRODUCTS

## Bilco's History



The Bilco Company has served the building industry since 1926. During these years it has built a reputation among architects, engineers, specifiers, and the construction trades

for dependability and for products that are unequalled in design and workmanship. Bilco, a wholly owned subsidiary of AmesburyTruth which is a division of Tyman PLC, has been a pioneer in the development of the unique line of specialty access products found within this catalog.

## Bilco Today

The Bilco Company continues to be the industry leader in the design and manufacture of specialty access products. In order to better serve its customers, Bilco has added manufacturing facilities and strategic distribution throughout the world, along with establishing an extensive international network of factory-trained representatives. These representatives, combined with Bilco's highly skilled and dedicated personnel, ensure a level of customer service that is unequalled in the industry. As the leader in design innovation, many of Bilco's products incorporate features for which numerous U.S. and international patents have been issued. Years of engineering experience, coupled with manufacturing facilities utilizing the most modern equipment available, allows Bilco to design and fabricate access products for virtually every application.

## Our Commitment



Bilco products are designed and fabricated to consistently high quality standards to ensure complete customer satisfaction.

As part of its commitment, Bilco

has implemented a quality system, which has achieved ISO 9001 certification. The Bilco Company is committed to producing access products that are unequalled in quality, design and workmanship.



Headquarters – New Haven, Connecticut



Manufacturing – Trumann, Arkansas

## Our Guarantee

Bilco warrants its products against defects in material and workmanship for a period of five years from the date of purchase, unless otherwise indicated in this catalog. Should a part fail to function in normal use within this period, Bilco shall furnish a new part at no charge. Electric motors, special finishes and other special equipment (if applicable) shall be warranted separately by the manufacturers of those products.





# INDEX

## Roof Access Hatches

4



Thermally Broken Roof Hatch	6
Type S, Type E	7
Type NB	8
Type L	9
Type GS	10
VersaMount®	11
Security Series	12
Type F, Type SS, Type D	13

## Automatic Smoke Vents

16



Type DSH	18
Lumivent®	19
Type ACDSH	20
Type SV	21
Roof Access Hatch & Automatic Smoke Vent Options	22

## Floor Access Doors

24



Type J-AL, JD-AL	26
Type J-AL H20, JD-AL H20	27
Type J, JD	28
Type J-H20, JD-H20	29
Type K, KD	30
Type Q	31
Type T, TD	32
Type TER, TRD	33
Type FR	34
Type SM	35
Special Application Doors	36
Floor Door Options	37

## Safety Products

14, 15, 38



NEW! Bil-Guard® 2.0 Hatch Safety Railing System	14
LadderUp® Safety Post	15
Floor Door Fall Protection Grating	38

Product details and specifications are readily available by visiting our download center on [www.bilco.com](http://www.bilco.com).

### U.S. and International Bilco patents issued...

5,373,665	5,927,012	6,260,305	6,931,793
5,554,433	5,960,596	6,347,818	Other U.S. and
5,565,274	6,041,553	6,672,020	International patents
			issued and pending.



The Bilco Company

P.O. Box 1203, New Haven, CT 06505 • Phone: (800) 366-6530 • Fax (203) 535-1582 • e-mail: [commercial@bilco.com](mailto:commercial@bilco.com)

Web: [www.bilco.com](http://www.bilco.com)

**Visit [www.bilco.com](http://www.bilco.com) to find a Bilco sales representative near you.**

The Bilco Company reserves the right to make design changes or to withdraw designs and products shown throughout this catalog without notice as we deem advisable.

©2016 The Bilco Company, New Haven, Connecticut 06505



Bilco roof hatches provide safe and convenient access to roof areas by means of an interior ladder, ship stair or service stair. A variety of special sizes are also available to provide an accessible way to install or remove large pieces of equipment from a building.

## Typical Applications

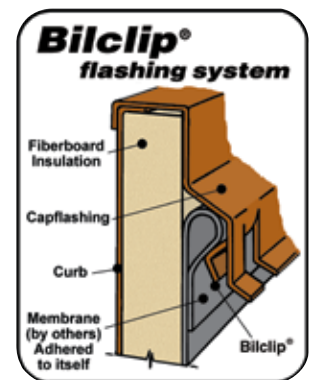
- Banks
- Prisons
- Factories
- Fast Food Restaurants
- Gymnasiums
- Hospitals
- Hotels
- High-Rise Housing
- Office Buildings
- Manufacturing Plants
- Schools
- Shopping Centers
- Storage Facilities
- Distribution Depots
- Warehouses

## Features & Benefits

- Weathertight construction
- Fully insulated and gasketed for energy efficiency
- Lift assistance for smooth, easy, one-hand operation
- Corrosion resistant hardware
- Bilclip® Flashing System for ease of installation
- Custom sizes and options are readily available
- Sizes available with Miami-Dade County and Florida Product Approval



*Look for this logo in roof hatch section for approved sizes*



*Standard on all Bilco roofing products.*





1. Heavy duty slam latch securely locks cover in the closed position. Interior/exterior padlock hasps provide additional security. (Note: Double leaf roof hatches and roof hatches over 7'0" (2.13m) in length have a 2-point latch.)
2. Interior reinforcing members are welded in place for cover strength and rigidity.
3. Rugged hold-open arm automatically locks the cover in the open position. Grip handle allows for easy, one-hand release and closing.
4. Fully insulated cover and curb.
5. Extruded EPDM rubber gasket permanently adhered to the underside of cover. Finger design ensures complete weathertightness.
6. Fully enclosed compression springs counterbalance the cover for smooth, easy and controlled operation regardless of size or weight.
7. All Bilco roof hatches feature pre-punched capflashing to receive the Bil-Guard® 2.0 Hatch Safety Railing System (see page 14 for more information).



## Thermally Broken Roof Hatch



### Introducing the Thermally Broken Roof Hatch, the New Standard in Energy Efficiency

Thermally broken roof hatches feature a frame and cover design that minimizes heat transfer between interior and exterior metal surfaces. The result is a product that resists harmful condensation and provides superior energy efficiency.



The low-conductivity element integrated between the interior and exterior surfaces of the cover and frame not only reduces heat transfer, but also dampens vibration for improved acoustic performance, while the 3" of polyisocyanurate insulation provides an R-value of 18 for superior energy performance.

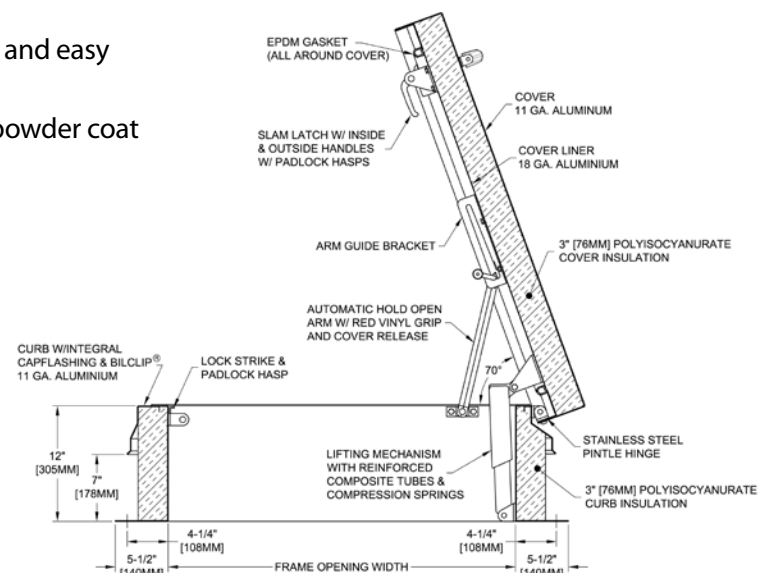
#### Features & Benefits

- Thermally broken design
- Aluminum construction
- R-18 insulation in the cover & curb
- Special gasketing for wind resistance
- Counter-balanced lift assistance for easy one-hand operation
- Automatic hold-open arm
- Heavy-duty slam latch with padlock hasps
- Innovative Bilclip® flashing system for quick and easy installation on single-ply roofs
- Available with an optional factory-applied powder coat paint finish

#### Standard Sizes and Weights

SIZE (width x length)		ALUMINUM
inches	mm	Model#
36 x 30 (H)	914 x 762 (H)	S-50-TB
36 x 36	914 x 914	E-50-TB
48 x 48	1219 x 1219	F-50-TB
30 x 54 (H)	760 x 1370 (H)	NB-50-TB
30 x 96 (H)	760 x 2440 (H)	L-50-TB

H = Hinge Side Special sizes are also available (Type SS-50-TB)

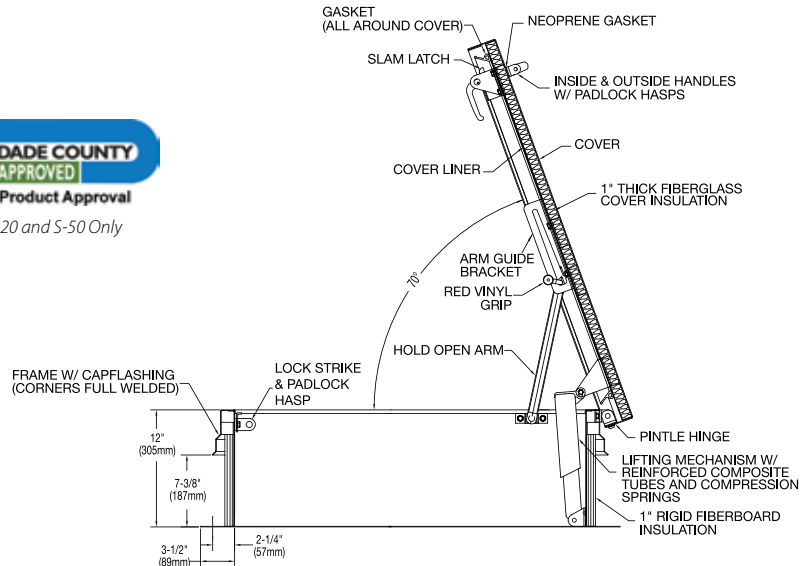




# Type S, Type E Ladder Access



Type S Shown



## Description:

The easy, one-hand operation, to the fully open or closed position, provides the user the security of having one hand firmly on the ladder at all times. Available in galvanized steel, aluminum or stainless steel construction.

## Specifications:

### Material (select one)

- Steel: Cover and frame are 14 gauge (1.9mm) G-90 paint bond galvanized steel
- Aluminum: Cover and frame are 11 gauge (2.3mm) aluminum
- Stainless Steel: Cover and frame are 14 gauge (1.9mm) Type 304 stainless steel

### Cover

Brakeformed, hollow-metal design with 1" (25.4mm) concealed fiberglass insulation, 3" (76mm) beaded, overlapping flange, fully welded at corners, and internally reinforced for 40 psf (195 kg/m<sup>2</sup>) live load

### Curb

12" (305mm) in height with integral capflashing, 1" (25.4mm) fiberboard insulation, fully welded at corners, and 3-1/2" (89mm) mounting flange with 7/16" holes (11mm) provided for securing frame to the roof deck

### Gasket

Extruded EPDM rubber gasket permanently adhered to cover

### Hinges

Heavy-duty pintle hinges with 3/8" (9.5mm) Type 316 stainless steel hinge pins

### Latch

Slam latch with interior and exterior turn handles and padlock hasps

### Lift Assistance

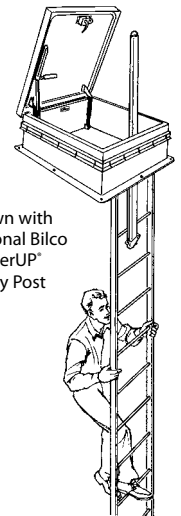
Compression spring operators enclosed in telescopic tubes. Automatic hold-open arm with grip handle release.

### Finish

- Steel: Alkyd base red oxide primer
- Aluminum: Mill finish
- Stainless Steel: Type 304 stainless steel with bead blast finish

### Hardware

- Steel: Engineered composite compression spring tubes. Steel compression springs. All other hardware is zinc plated/chromate sealed.
- Aluminum: Engineered composite compression spring tubes. Steel compression springs. Type 316 stainless steel hinges. All other hardware is zinc plated/chromate sealed.
- Stainless Steel: Type 316 stainless steel



Shown with optional Bilco LadderUP Safety Post



## Standard Sizes and Weights

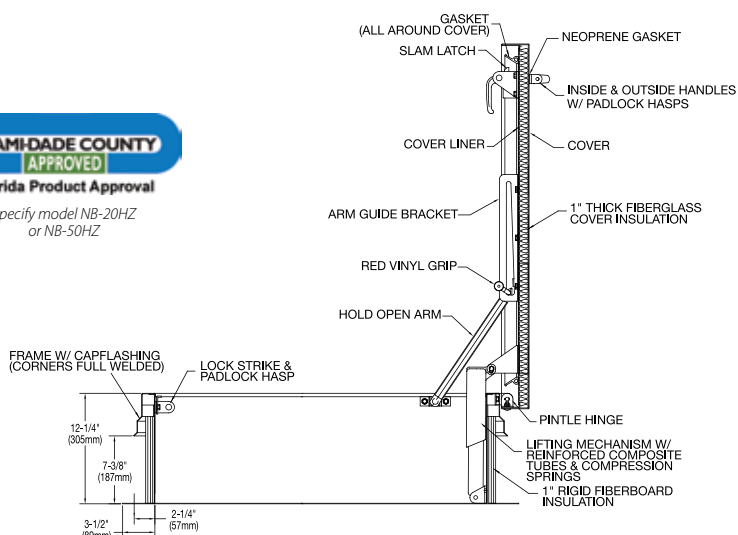
SIZE		STEEL			STEEL CURB & ALUMINUM COVER			ALUMINUM			STAINLESS STEEL		
(width x length)		Model #	Weight		Model #	Weight		Model #	Weight		Model #	Weight	
inches	mm		lbs.	kg.		lbs.	kg.		lbs.	kg.		lbs.	kg.
36 x 30	914 x 762	S-20	183	83	S-40	150	68	S-50	110	50	S-90*	183	83
36 x 36	914 x 914	E-20	207	94	E-40	184	84	E-50	117	53	E-90*	207	94

\* This model is a special order.

## Type NB Ship Stair Access



Specify model NB-20HZ  
or NB-50HZ



### Description:

Ideal for installations where frequent use may be expected. Permits easier movement of maintenance personnel, tools, and equipment. Available in galvanized steel, aluminum or stainless steel construction.

### Specifications:

#### Material (select one)

- Steel: Cover and frame are 14 gauge (1.9mm) G-90 paint bond galvanized steel
- Aluminum: Cover and frame are 11 gauge (2.3mm) aluminum
- Stainless Steel: Cover and frame are 14 gauge (1.9mm) Type 304 stainless steel

#### Cover

Brakeformed, hollow-metal design with 1" (25.4mm) concealed fiberglass insulation, 3" (76mm) beaded, overlapping flange, fully welded at corners, and internally reinforced for 40 psf (195 kg/m<sup>2</sup>) live load

#### Curb

12" (305mm) in height with integral capflashing, 1" (25.4mm) fiberboard insulation, fully welded at corners, and 3-1/2" (89mm) mounting flange with 7/16" holes (11mm) provided for securing frame to the roof deck

#### Gasket

Extruded EPDM rubber gasket permanently adhered to cover

#### Hinges

Heavy-duty pintle hinges with 3/8" (9.5mm) Type 316 stainless steel hinge pins

#### Latch

Slam latch with interior and exterior turn handles and padlock hasps (specify enclosed two point spring latch with interior and exterior turn handles and padlock hasps for Type NB-20HZ and NB-50HZ Miami-Dade Approved models)

#### Lift Assistance

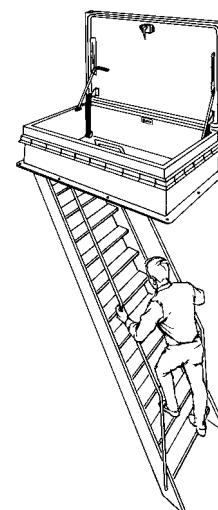
Compression spring operators enclosed in telescopic tubes. Automatic hold-open arm with grip handle release.

#### Finish

- Steel: Alkyd base red oxide primer
- Aluminum: Mill finish
- Stainless Steel: Type 304 stainless steel with bead blast finish

#### Hardware

- Steel: Engineered composite compression spring tubes. Steel compression springs. All other hardware is zinc plated/chromate sealed.
- Aluminum: Engineered composite compression spring tubes. Steel compression springs. Type 316 stainless steel hinges. All other hardware is zinc plated/chromate sealed.
- Stainless Steel: Type 316 stainless steel



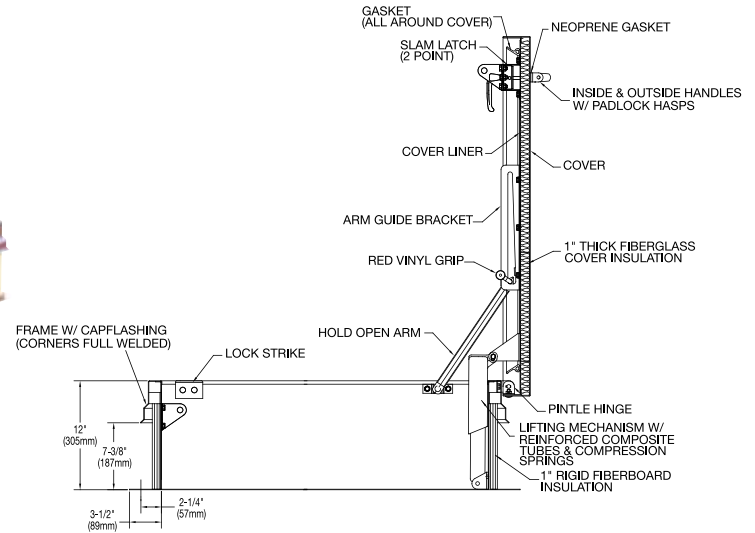
### Standard Sizes and Weights

SIZE		STEEL			STEEL CURB & ALUMINUM COVER			ALUMINUM			STAINLESS STEEL		
(width x length)		Model #	Weight		Model #	Weight		Model #	Weight		Model #	Weight	
inches	mm		lbs.	kg.		lbs.	kg.		lbs.	kg.		lbs.	kg.
30 x 54	762 x 1372	NB-20	239	109	NB-40	190	86	NB-50	139	63	NB-90*	239	109
30 x 54	762 x 1372	NB-20HZ	239	109	Consult Factory			NB-50HZ	139	63	Consult Factory		

\*This model is a special order.



# Type L Service Stair Access



## Description:

Ideal for installations where frequent use may be expected. Permits easier movement of maintenance personnel, tools and equipment from a full size stairway. Available in galvanized steel, aluminum or stainless steel construction.

## Specifications:

### Material (select one)

- Steel: Cover and frame are 14 gauge (1.9mm) G-90 paint bond galvanized steel
- Aluminum: Cover and frame are 11 gauge (2.3mm) aluminum
- Stainless Steel: Cover and frame are 14 gauge (1.9mm) Type 304 stainless steel

### Cover

Brakeformed, hollow-metal design with 1" (25.4mm) concealed fiberglass insulation, 3" (76mm) beaded, overlapping flange, fully welded at corners, and internally reinforced for 40 psf (195 kg/m<sup>2</sup>) live load

### Curb

12" (305mm) in height with integral capflashing, 1" (25.4mm) fiberboard insulation, fully welded at corners, and 3-1/2" (89mm) mounting flange with 7/16" holes (11mm) provided for securing frame to the roof deck

### Gasket

Extruded EPDM rubber gasket permanently adhered to cover

### Hinges

Heavy-duty pintle hinges with 3/8" (9.5mm) Type 316 stainless steel hinge pins

### Latch

Enclosed two-point spring latch with interior and exterior turn handles and padlock hasps

### Lift Assistance

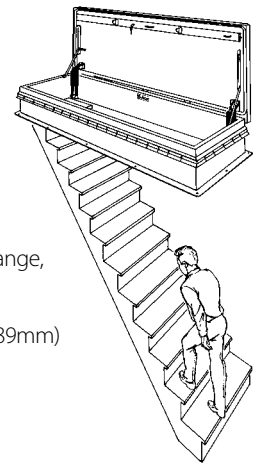
Compression spring operators enclosed in telescopic tubes. Automatic hold-open arm with grip handle release.

### Finish

- Steel: Alkyd base red oxide primer
- Aluminum: Mill finish
- Stainless Steel: Type 304 stainless steel with bead blast finish

### Hardware

- Steel: Engineered composite compression spring tubes. Steel compression springs. All other hardware is zinc plated/chromate sealed.
- Aluminum: Engineered composite compression spring tubes. Steel compression springs. Type 316 stainless steel hinges. All other hardware is zinc plated/chromate sealed.
- Stainless Steel: Type 316 stainless steel

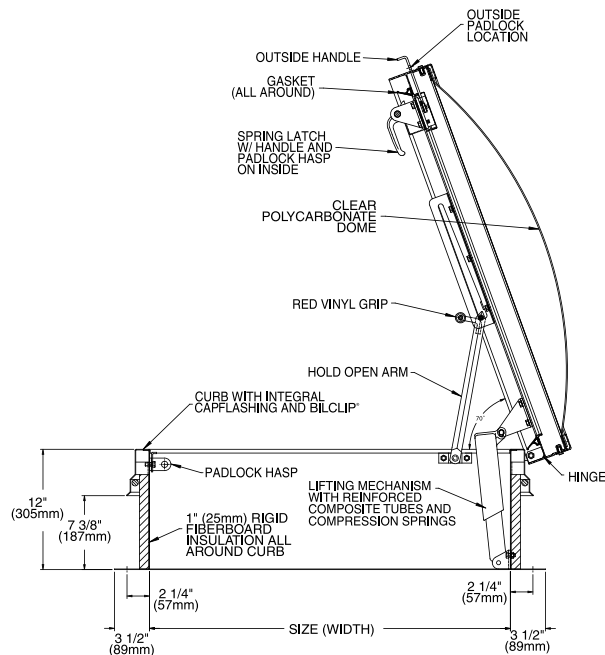


## Standard Sizes and Weights

SIZE		STEEL			STEEL CURB & ALUMINUM COVER			ALUMINUM			STAINLESS STEEL		
(width x length)		Model #	Weight		Model #	Weight		Model #	Weight		Model #	Weight	
inches	mm		lbs.	kg.		lbs.	kg.		lbs.	kg.		lbs.	kg.
30 x 96	762 x 2438	L-20	434	197	L-40	295	134	L-50	253	115	L-90*	434	197

\* This model is a special order.

## Type GS Ladder Access



### Description:

All the security and convenience of the Type S roof hatch with the added benefits of a skylight. GS Roof Hatches feature aluminum construction and virtually indestructible polycarbonate domes.

### Specifications:

#### Material

Cover and frame are 11 gauge (2.3mm) aluminum

#### Cover

Aluminum extrusion with built-in condensation drainage channel and clear polycarbonate dome or double domes

#### Curb

12" (305mm) in height with integral capflashing, 1" (25.4mm) fiberboard insulation, fully welded at corners, and 3-1/2" (89mm) mounting flange with 7/16" holes (11mm) provided for securing frame to the roof deck

#### Gasket

Extruded EPDM rubber gasket permanently adhered to the cover

#### Hinges

Heavy-duty pintle hinges with 3/8" (9.5mm) Type 316 stainless steel hinge pins

#### Latch

Slam latch with interior and exterior padlock hasps

#### Lift Assistance

Compression spring operators enclosed in telescopic tubes. Automatic hold-open arm with grip handle release.

#### Finish

Mill finish

#### Hardware

Engineered composite compression spring tubes. Steel compression springs. Type 316 stainless steel hinges. All other hardware is zinc plated/chromate sealed.



### Standard Sizes and Weights

SIZE		ALUMINUM W/ SKYLIGHT					
		SINGLE DOME			DOUBLE DOME		
(width x length)		Model #	Weight		Model #	Weight	
inches	mm		lbs.	kg.		lbs.	kg.
36 x 30	914 x 762	GS-50	115	52	MGS-50	135	61

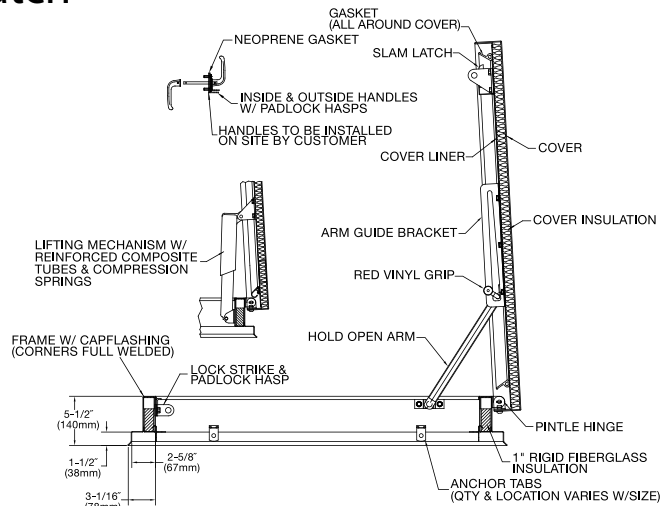




# The VersaMount® Access Hatch



Optional anodized finish shown



## Description:

The VersaMount® replacement hatch allows you to replace a damaged roof hatch without re-roofing. Simply remove the cover from the damaged hatch and place the VersaMount® hatch on top of the existing curb. The low-profile curb features a built-in flange and apron and innovative anchor clip system to ensure a fast, secure and weathertight installation. Available in a number of standard sizes.

## Specifications:

### Material (select one)

- Steel: Cover and frame are 14 gauge (1.9mm) G-90 paint bond galvanized steel
- Aluminum: Cover and frame are 11 gauge (2.3mm) aluminum
- Stainless Steel: Cover and frame are 14 gauge (1.9mm) Type 304 stainless steel

### Cover

Brakeformed, hollow-metal design with 1" (25.4mm) concealed fiberglass insulation, 3" (76mm) beaded, overlapping flange, fully welded at corners, and internally reinforced for 40 psf (195 kg/m<sup>2</sup>) live load

### Curb

4" (102mm) in height, brakeformed hollow-metal design with 1" (25.4mm) concealed fiberglass insulation, 2-5/8" (67mm) mounting flange and 1-1/2" (38mm) apron, fully welded at corners. Stainless steel anchor clips are included.

### Gasket

Extruded EPDM rubber gasket permanently adhered to the cover

### Hinges

Heavy-duty pintle hinges with 3/8" (9.5mm) Type 316 stainless steel hinge pins

### Latch

Slam latch with interior and exterior turn handles and padlock hasps

### Lift Assistance

Compression spring operators enclosed in telescopic tubes. Automatic hold-open arm with grip handle release.

### Finish

- Steel: Alkyd base red oxide primer
- Aluminum: Mill finish
- Stainless Steel: Type 304 stainless steel with bead blast finish

### Hardware

- Steel: Engineered composite compression spring tubes. Steel compression springs. All other hardware is zinc plated/chromate sealed.
- Aluminum: Engineered composite compression spring tubes. Steel compression springs. Type 316 stainless steel hinges. All other hardware is zinc plated/chromate sealed.
- Stainless Steel: Type 316 stainless steel



Job-Built Wood Curbs



Job-Built Concrete Curbs



Existing Roof Hatch or Job-Built/Prefab Metal Curbs

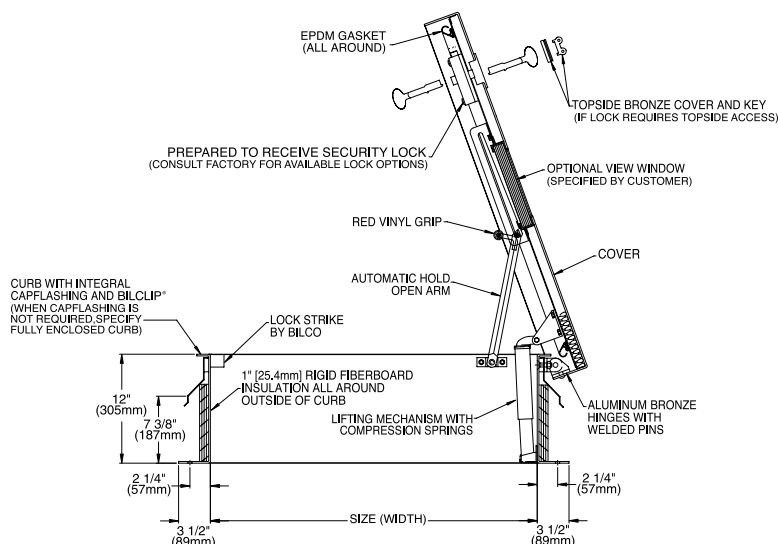
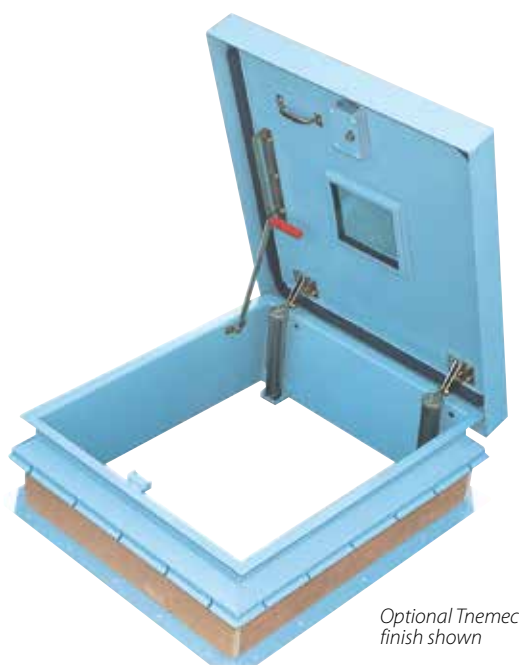
## Standard Sizes and Weights

SIZE		STEEL			ALUMINUM			STAINLESS STEEL		
(width x length)		Model #	Weight		Model #	Weight		Model #	Weight	
inches	mm		lbs.	kg.		lbs.	kg.		lbs.	kg.
36 x 30	914 x 762	S-20VM	152	70	S-50VM	86	39	S-90VM*	152	70
30 x 54	762 x 1372	NB-20VM	180	82	NB-50VM	100	46	NB-90VM*	180	82
30 x 96	762 x 2438	L-20VM	320	145	L-50VM	178	81	L-90VM*	320	145
1m x 1m		EW-20VM	170	77	EW-50VM	90	41	EW-90VM*	170	77

\*These models are a special order.



## Security Series Access Hatch



**Description:**

Constructed of heavier gauge materials for high security applications such as prisons, banks, embassies, and pharmaceutical buildings. Roof hatches can be fabricated for field installation of many leading brands of security locks. Other options include security glazing and gunports. (See page 23 for more information.)

**Specifications:**

## Material (select one)

Steel: Cover and frame are 3/16" (4.76mm) steel  
Aluminum: Cover and frame are 3/16" (4.76mm) aluminum

## Cover

Brakeformed, hollow-metal design with 1" (25.4mm) concealed fiberglass insulation, 3" (76mm) beaded, overlapping flange, fully welded at corners, and internally reinforced for 40 psf (195 kg/m<sup>2</sup>) live load

**Curb**

12" (305mm) in height with integral capflashing, 1" (25.4mm) fiberboard insulation, fully welded at corners, and 3-1/2" (89mm) mounting flange with 7/16" holes (11mm) provided for securing frame to the roof deck

**Gasket**

Extruded EPDM rubber gasket permanently adhered to cover

## Hinges

Heavy-duty aluminum bronze hinges

## Latch

Factory prepared to receive a deadbolt detention lock (specify manufacturer and model #), supplied and installed by others in the field. Consult factory if an alternate lock is required.

## Lift Assistance

Compression spring operators enclosed in telescopic tubes. Automatic hold-open arm with grip handle release.

## Finish

Steel: Alkyd base red oxide primer  
Aluminum: Mill finish

## Hardware

Steel compression springs and type 316 stainless steel spring tubes. All other hardware is zinc plated/chromate sealed.

## Standard Sizes and Weights

SIZE		STEEL				ALUMINUM			
(width x length)		Model #	Weight		Open Angle	Model #	Weight		Open Angle
inches	mm		lbs.	kg.			lbs.	kg.	
36 x 30	914 x 762	S-20C	386	175	70°	S-50C	150	68	70°
36 x 36	914 x 914	E-20C	400	181	70°	E-50C	176	80	70°
30 x 54	762 x 1372	NB-20C	475	215	90°	NB-50C	210	95	90°

# Type F, Type SS, Type D Equipment Access

## Description:

The larger opening provides an easily accessible means for equipment to be installed or removed from a building. Equipment access roof hatches are available in steel, aluminum and stainless steel construction and in one standard single leaf size [Type F, 48" x 48" (1219mm x 1219mm)]. Special single leaf sizes (Type SS) are available and are recommended for widths up to 5'0" (1524mm). For larger openings, specify double leaf construction (Type D). For best operation, specify aluminum construction for single leaf hatches over 3'0" (914mm) wide and double leaf hatches over 7'0" (2134mm) in width.

## Specifications:

### Material (select one)

- Steel: Cover and frame are 14 gauge (1.9mm) G-90 paint bond galvanized steel
- Aluminum: Cover and frame are 11 gauge (2.3mm) aluminum
- Stainless Steel: Cover and frame are 14 gauge (1.9mm) Type 304 stainless steel

### Cover

Brazeformed, hollow-metal design with 1" (25.4mm) concealed fiberglass insulation, 3" (76mm) beaded, overlapping flange, fully welded at corners, and internally reinforced for 40 psf (195 kg/m<sup>2</sup>) live load

### Curb

12" (305mm) in height with integral capflashing, 1" (25.4mm) fiberboard insulation, fully welded at corners, and 3-1/2" (89mm) mounting flange with 7/16" holes (11mm) provided for securing frame to the roof deck

### Gasket

Extruded EPDM rubber gasket permanently adhered to cover

### Hinges

Heavy-duty pintle hinges with 3/8" (9.5mm) Type 316 stainless steel hinge pins

### Latch

- Single leaf: Slam latch with interior and exterior turn handles and padlock hasps [units 7'0" (2133.6mm) in length and over shall be supplied with a two point lock]
- Double leaf: Enclosed two-point spring latch with interior and exterior turn handles and padlock hasps

### Lift Assistance

Compression spring operators enclosed in telescopic tubes. Automatic hold-open arm with grip handle release.

### Finish

- Steel: Alkyd base red oxide primer
- Aluminum: Mill finish
- Stainless Steel: Type 304 stainless steel with bead blast finish

### Hardware

- Steel: Engineered composite compression spring tubes. Steel compression springs. All other hardware is zinc plated/chromate sealed.
- Aluminum: Engineered composite compression spring tubes. Steel compression springs. Type 316 stainless steel hinges.
- Stainless Steel: All other hardware is zinc plated/chromate sealed.

## Standard Sizes and Weights

SIZE		STEEL CURB& ALUMINUM COVER			ALUMINUM		
(width x length)		Model #	Weight		Model #	Weight	
inches	mm		lbs.	kg.		lbs.	kg.
48 x 48	1219 x 1219	F-40	275	125	F-50	218	99

## Special Sizes

Type SS - Single Leaf  
Type D - Double Leaf  
Contact Bilco for more information



Type D Double Leaf Roof Hatch Shown



Type F Single Leaf Roof Hatch Shown

## **NEW! Bil-Guard® 2.0 Hatch Safety Railing System**

Now Featuring Corrosion-Resistant Aluminum Rails



Patented and patent pending

### **Bil-Guard® 2.0** Hatch Safety Railing System

#### Standard Features and Benefits

- Meets and exceeds OSHA 29 CFR 1910.23
- Non-penetrating attachments; quick and simple installation with standard tools
- Corrosion-resistant aluminum rails and mounting brackets, along with stainless steel hardware, are ideal for any climate
- Safety yellow powder coat paint finish
- Self-closing and locking gate
- Fits all brands of roof hatches with capflashing
- Available in standard and custom sizes

#### Specifications:

Posts and rails are 1¼" schedule 40 pipe in 6061 T6 aluminum alloy. Curb mounting brackets and teardrop brackets are 6063 T5 aluminum extrusion. Locking mechanism is cast aluminum and spring hinges and all fasteners are type 316 stainless steel. Hatch rail system satisfies the requirements of OSHA 29 CFR 1910.23 and meets OSHA strength requirements. Finish shall be safety yellow powder coat paint finish. Manufacturer shall provide a 5-year warranty against defects in material and workmanship.



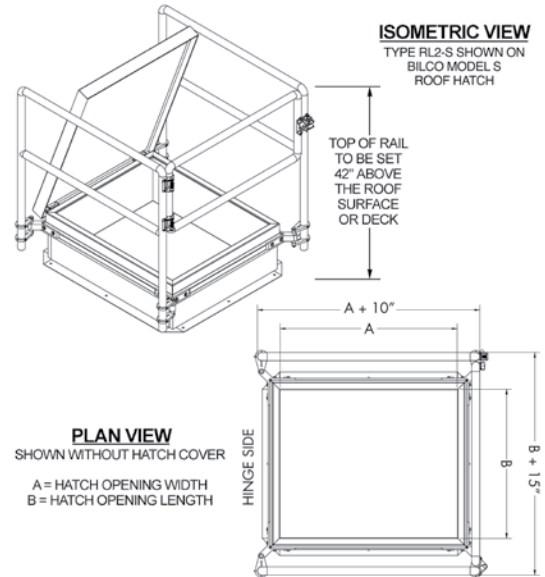
Stainless steel spring hinges and self-closing gate



Automatic gate latch with interior and exterior release — patent pending



Pivoting post mounting brackets



Bil-Guard® 2.0 is a fixed railing system that provides a permanent means of fall protection for hatch openings. Tested and proven to meet and exceed OSHA fall protection standards (29 CFR 1910.23), Bil-Guard® 2.0 features an innovative attachment system that does not penetrate the roofing membrane, installs quickly and easily using basic tools, and does not require special training or certification for proper installation.

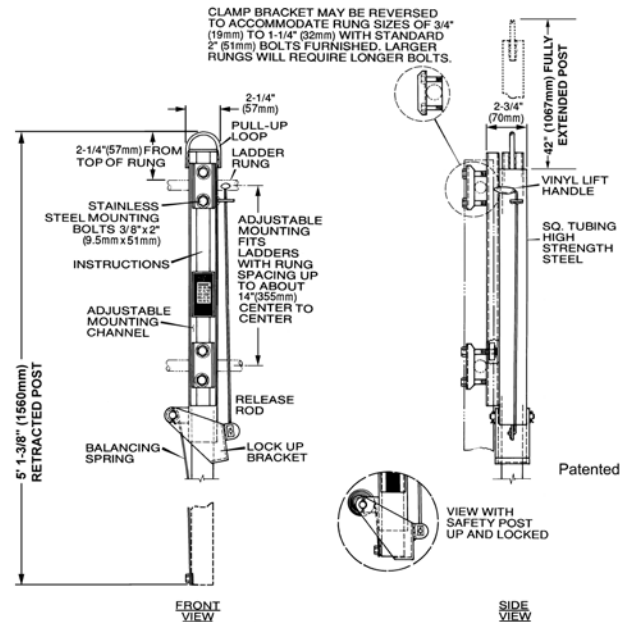
#### Standard Sizes and Weights

ROOF HATCH SIZE (width x length)		ROOF HATCH MODEL	BIL-GUARD 2.0 MODEL
inches	mm		
36 x 30	914 x 762	S	RL2-S
36 x 36	914 x 914	E	RL2-E
48 x 48	1219 x 1219	F	RL2-F
30 x 54	762 x 1372	NB	RL2-NB
30 x 96	762 x 2438	L	RL2-L

Special sizes available. Contact Bilco for more information.



# LadderUP® Safety Post



LadderUP® Safety Posts provide easier, safer ladder access through roof hatches, floor access doors and manholes. This telescoping post permanently mounts to the top two rungs of any fixed ladder, providing a positive hand-hold and enabling the user to enter or exit an opening in an upright and balanced position.

## Standard Features and Benefits

- Adjustable mounting hardware accommodates virtually any ladder rung size or spacing
- Telescoping design is spring balanced for ease of operation
- Automatically locks in the fully raised position to provide the user with a firm and steady hand-hold
- Handy release lever allows the post to be easily lowered to its retracted position
- Available in four levels of corrosion resistance to provide many years of trouble free, dependable service

## Specifications:

Install on fixed ladder(s) below hatch cover(s), LadderUP® safety post Model \_\_\_\_ as manufactured by The Bilco Company. Device shall be (refer to chart for material/finish of model specified). It shall be designed with a telescoping tubular section that locks automatically when fully extended. Upward and downward movement shall be controlled by a stainless steel spring balancing mechanism. Unit shall be completely assembled with fasteners for securing to the ladder rungs in accordance with the manufacturer's instructions. If installation is to be in corrosive atmosphere, specify Model LU-2, LU-3 or LU-4 as conditions warrant.

## Standard Sizes and Weights

Model#	Material/Finish	Weight	
		lbs.	kg.
LU-1	Steel, yellow powder coat	24	11
LU-2	Steel, hot dip galvanized	24	11
LU-3	Type 304 Stainless Steel, sand blast finish	24	11
LU-4	Aluminum, mill finish	14	7



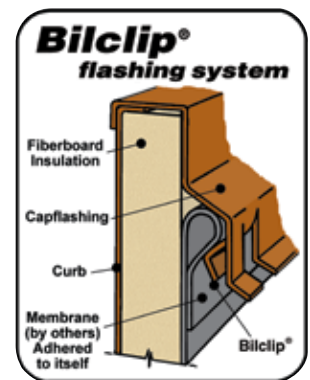
Automatic Smoke Vents protect property and aid firefighters in bringing a fire under control by removing smoke, heat, and gases from a burning building. Smoke vents are ideally suited for large expanses of unobstructed space such as factories, warehouses, auditoriums, and retail facilities.

## Typical Applications

- Aircraft Hangars
- Auditoriums
- Concert Halls
- Convention Centers
- Elevator Shafts
- Factories
- Gymnasiums
- Manufacturing Plants
- Pools
- Processing Plants
- Retail Structures
- Schools
- Storage Facilities
- Transit Facilities
- Warehouses
- Other open floor space facilities

## Features & Benefits

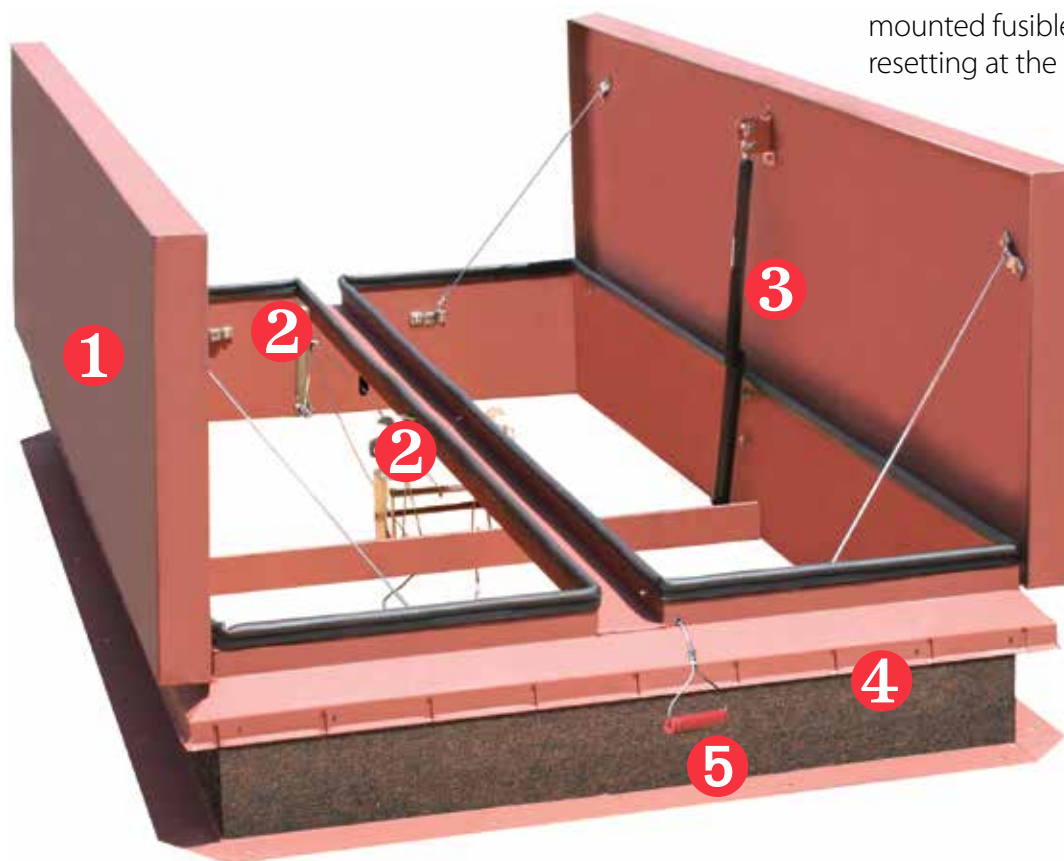
- Increased evacuation time and decreased risk of smoke inhalation and damage
- Enhanced visibility to allow firefighters to quickly locate the fire
- Protection against secondary ignitions and lateral fire spread
- Exhausting of noxious and potentially explosive fumes
- Structure protection from damaging heat
- Reduce damage to building contents
- Available in a number of UL approved sizes
- Bilclip® Flashing System for ease of installation



*Standard on all Bilco roofing products.*



1. Fully insulated and gasketed covers for weathertight performance.
2. Thermolatch® II latching mechanism with curb mounted fusible link housing for quick and easy resetting at the roof level.



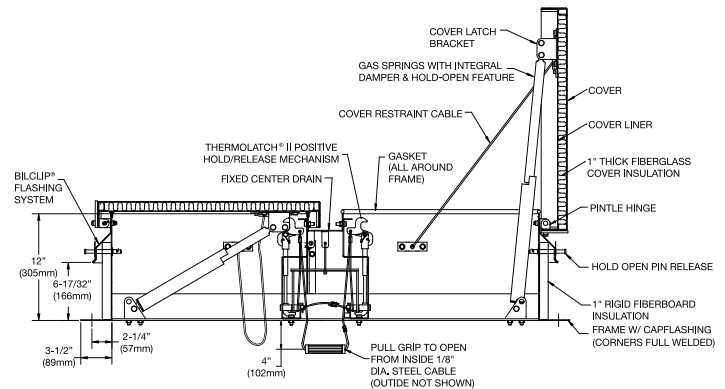
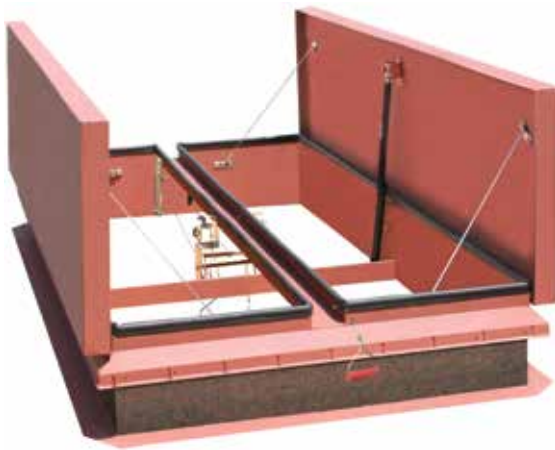
3. Gas springs open covers against a 10 psf (49 kg/m<sup>2</sup>) snow/wind load and integral dampers ensure a controlled rate of operation. Covers automatically lock in the open position upon vent activation. (Note: Single leaf models are supplied with compression spring operators and shock absorbers.)
4. All Bilco roof products feature pre-punched capflashing to receive the Bil-Guard® 2.0 Hatch Safety Railing System (see page 14 for more information).

5. Exterior and interior (not shown) pull release handles for manual operation.





## Type DSH Double Leaf



### Description:

DSH series smoke vents are available in a number of standard UL-listed sizes. Features include fully insulated covers and galvanized steel or aluminum construction.

### Specifications:

#### Material (select one)

Steel: Cover and frame are 14 gauge (1.9mm) G-90 paint bond galvanized steel  
Aluminum: Cover and frame are 11 gauge (2.3mm) aluminum

#### Operation

When released, high-performance gas springs open covers against a 10 psf (49 kg/m<sup>2</sup>) snow/wind load and lock covers in the full open position. Gas springs have integral dampers to assure a controlled rate of cover opening and have a cyclic durability of 50,000 cycles.

#### Covers

Brakeformed, hollow-metal design with 1" (25.4mm) concealed fiberglass insulation, 3" (76mm) beaded, overlapping flange, fully welded at corners, and internally reinforced for 40 psf (195 kg/m<sup>2</sup>) live load

#### Curb

12" (305mm) in height with integral capflashing, 1" (25.4mm) fiberboard insulation, fully welded at corners, and 3-1/2" (89mm) mounting flange with 7/16" holes (11mm) provided for securing frame to the roof deck

#### Gasket

Dual durometer, co-extruded, EPDM rubber gasket mechanically fastened to the top of the curb

#### Hardware

Gas springs have a chrome plated inner rod and powder coated outer tube. All other hardware is zinc plated/chromate sealed or galvanized. Note: models with aluminum covers have type 316 stainless steel hinges.

#### Hinges

Heavy-duty pintle hinges with 3/8" (9.5mm) Type 316 stainless steel hinge pins

#### Latch

Positive hold/release mechanism controlled by a single UL-listed 165°F (74°C) fusible link with a separate latching point for each cover. Designed to hold the covers closed against a 90 psf (438 kg/m<sup>2</sup>) wind uplift force. Provided with interior and exterior pull release cables to manually open vent covers.

#### Performance Ratings

UL-listed. Complies with UL 793 and UL 790 Class A (burning brand test).

#### Finish

Steel: Alkyd base red oxide primer  
Aluminum: Mill finish



Shown with optional railing system

### Standard Sizes and Weights Contact Bilco for special size requirements

SIZE		STEEL			STEEL CURB & ALUMINUM COVERS			ALUMINUM		
(width x length)		Model #	Weight		Model #	Weight		Model #	Weight	
inches	mm		lbs.	kg.		lbs.	kg.		lbs.	kg.
48 x 48	1219 x 1219	DSH4848	367	166	DSH4848A	315	143	DSH4848B	260	118
48 x 72	1219 x 1829	DSH4872	455	206	DSH4872A	390	177	DSH4872B	320	145
48 x 90	1219 x 2286	DSH4890	544	247	DSH4890A	460	209	DSH4890B	380	172
48 x 96	1219 x 2438	DSH4896	617	280	DSH4896A	485	220	DSH4896B	390	177
60 x 60	1524 x 1524	DSH6060	695	315	DSH6060A	445	202	DSH6060B	330	150
60 x 72	1524 x 1829	DSH6072	735	333	DSH6072A	480	218	DSH6072B	380	172
60 x 84	1524 x 2134	DSH6084	835	379	DSH6084A	565	256	DSH6084B	420	191
60 x 96	1524 x 2438	DSH6096	860	390	DSH6096A	585	265	DSH6096B	425	193
60 x 120	1524 x 3048	DSH60120	1047	475	DSH60120A <sup>†</sup>	710	322	DSH60120B <sup>†</sup>	530	240
66 x 66	1676 x 1676	DSH6666	650	295	DSH6666A	455	206	DSH6666B	395	179
66 x 144	1676 x 3658	DSH66144*	1530	694	DSH66144A*	1060	481	DSH66144B*	790	358
72 x 72	1829 x 1829	DSH7272	790	358	DSH7272A	555	252	DSH7272B	415	188

<sup>†</sup> This size has 2" thick covers with 2" of insulation. \* This size has four covers.



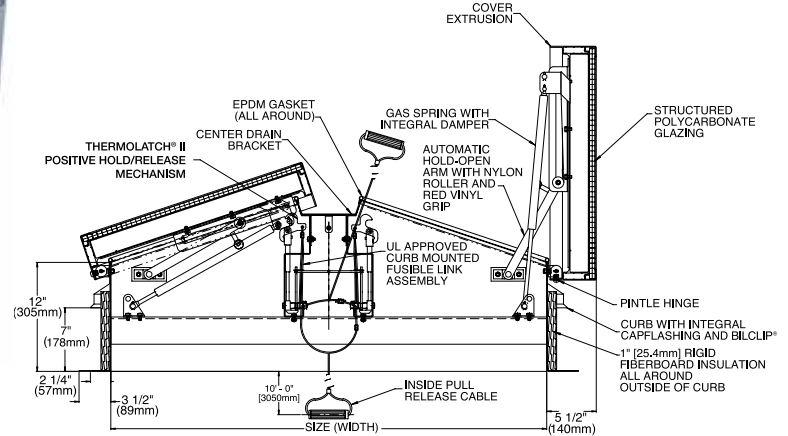
# The Lumivent® Double Leaf – Daylighting

## Sloped Cover Design

Meets International Building Code Requirements (2012 IBC 2610.3)



Optional  
anodized  
finish shown



### Description:

All the security and value of an automatic smoke vent with the added benefits of a skylight.

### Specifications:

#### Material

Cover and frame are 11 gauge (2.3mm) aluminum

#### Covers

Constructed with a translucent multi-wall polycarbonate sheet\* coated for UV resistance with rigid extruded aluminum frame. Glazing shall withstand a 40 psf (195 kg/m<sup>2</sup>) live load and provide an R-factor of 2.38 per ASTM D236.

#### Curb

12" (305mm) in height with integral capflashing, 1" (25.4mm) fiberboard insulation, fully welded at corners, and 3-1/2" (89mm) mounting flange with 7/16" holes (11mm) provided for securing frame to the roof deck

#### Gasket

Dual durometer, co-extruded, EPDM rubber gasket mechanically fastened to the top of the curb

#### Hinges

Heavy-duty stainless steel pintle hinges with 3/8" (9.5mm) Type 316 stainless steel hinge pins

#### Latch

Positive hold/release mechanism controlled by a single UL-listed 165°F (74°C) fusible link with a separate latching point for each cover. Designed to hold the covers closed against a 90 psf (438 kg/m<sup>2</sup>) wind uplift force. Provided with interior and exterior pull release cables to manually open vent covers.

### Operation

High performance gas springs open covers automatically against a 10 psf (49 kg/m<sup>2</sup>) snow/wind load when released. Gas springs have integral dampers to assure a controlled rate of cover opening and have a cyclic durability of 50,000 cycles. Automatic hold-open arms lock each cover in the full open position.

### Performance Ratings

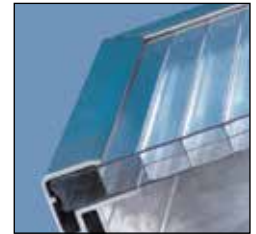
UL-listed. Covers with 4:12 slope to comply with International Building Code Requirements (2012 IBC 2610.3)

### Finish

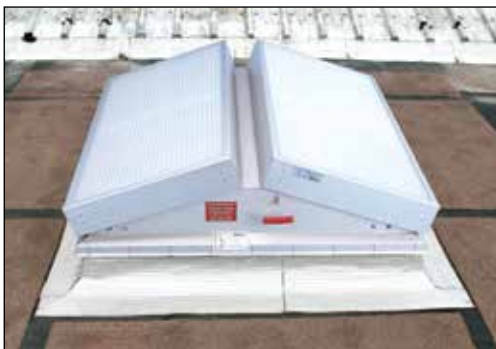
Mill finish

### Hardware

Gas springs have a powder coated outer tube and chrome plated inner rod. Type 316 stainless steel hinges. All other hardware is zinc plated/chromate sealed.



Features a multi-wall polycarbonate cover design that resists UV degradation and offers superior insulation performance compared to traditional domes



## Standard Sizes and Weights

SIZE		ALUMINUM		
(width x length)		Model #	Weight	
inches	mm		lbs.	kg.
48 x 48	1219 x 1219	LV4848B	226	103
48 x 72	1219 x 1829	LV4872B	296	134
48 x 96	1219 x 2438	LV4896B	366	166
60 x 60	1524 x 1524	LV6060B	308	140
60 x 96	1524 x 2438	LV6096B	388	176
66 x 144	1676 x 3658	LV66144B†	722	328

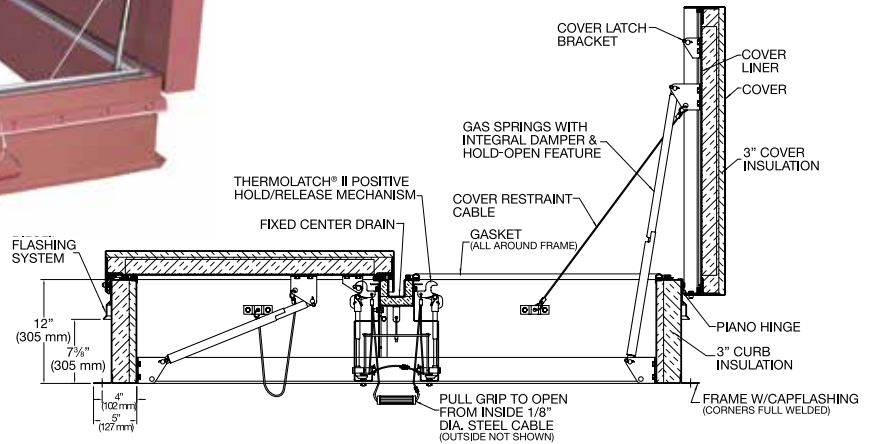
† This size has four covers.

\*The Bilco Lumivent smoke vent was designed and tested to meet the requirements of UL 793. As part of this testing procedure, UL 793 requires that the polycarbonate covers be subjected to a 400 ft. lb. test and remain intact to meet the OSHA fall protection standard CFR 1910.23. The Bilco Lumivent smoke vent meets or exceeds these requirements.

## Type ACDSH Double Leaf – Acoustical



**STC-46 SOUND RATING**



### Description:

Available in a number of standard UL-listed sizes, these vents are designed to guard against noise intrusion and at the same time provide the security of dependable automatic venting in the event of a fire. Vents carry an STC-46 sound rating and are ideal for concert halls, theaters, casinos, and other interior applications that require limited noise from the outside.

### Specifications:

#### Material

Cover and frame are 14 gauge (1.9mm) G-90 paint bond galvanized steel

#### Covers

Brakeformed, hollow-metal design with 3" (76 mm) concealed fiberglass insulation, 5" (127 mm) beaded, overlapping flange, fully welded at corners, and internally reinforced for 40 psf (195 kg/m<sup>2</sup>) live load

#### Curb

12" (305mm) in height with integral capflashing and 3" (76 mm) fiberglass insulation that is fully enclosed by a 14 gauge (1.9 mm) G-90 paint bond galvanized steel liner. Curb has fully welded corners and a 5" (127 mm) mounting flange with 7/16" holes (11 mm) provided for securing to the roof deck.

#### Gasket

Extruded PVC gaskets permanently adhered to underside of the covers and top of curb

#### Hinges

Heavy-duty zinc plated piano hinges with 1/4" (6 mm) hinge pins

#### Latch

Positive hold/release mechanism controlled by a single UL-listed 165°F (74°C) fusible link with a separate latching point for each cover. Designed to hold the covers closed against a 90 psf (438 kg/m<sup>2</sup>) uplift force. Interior and exterior pull release cables provided for manual vent operation.

#### Operation

Corrosion resistant gas springs open covers automatically against a 10 psf (49 kg/m<sup>2</sup>) snow/wind load when released. Gas springs have built in dampers to assure a controlled rate of opening and automatically lock the covers in the full open position.

#### Performance Ratings

UL listed. STC-46 sound rating. Complies with UL 793 and UL 790 Class A (burning brand test).

#### Finish

Alkyd base red oxide primer

#### Hardware

Corrosion-resistant gas springs and hot dip galvanized steel stop cables. All other hardware is zinc plated/chromate sealed.



### Standard Sizes and Weights

Contact Bilco for special size requirements

SIZE		STEEL		
(width x length)		Model #	Shipping Weight	
inches	mm		lbs.	kg.
48 x 48	1219 x 1219	ACDSH4848	650	295
48 x 60	1219 x 1524	ACDSH4860	755	343
48 x 72	1219 x 1829	ACDSH4872	845	383
48 x 90	1219 x 2286	ACDSH4890	985	447
48 x 96	1219 x 2438	ACDSH4896	1045	474
60 x 60	1524 x 1524	ACDSH6060	870	395
60 x 96	1524 x 2438	ACDSH6096	1120	508
60 x 120	1524 x 3048	ACDSH60120*	1550	703
66 x 144	1676 x 3658	ACDSH66144*	1650	749
72 x 72	1829 x 1829	ACDSH7272	1050	476

\* This size has four covers.